

Glendale Arizona Historical Society

"preservation of the past"

MARCH 2020 NEWSLETTER

Volume 41, Issue 3

UPCOMING EVENTS

at a glance
Please Save These Dates

MONDAY, MARCH 23, 2020

**History of
Glendale School District #40**
presented by **DAVITA SOLTER**
2:00 PM, Manistee Ranch

MONDAY, APRIL 27, 2020

History of Arrowhead Ranch
presented by **JON FROKE, AICP**
7:00 PM, Manistee Ranch

MONDAY, MAY 18, 2020

History of Sperry-Honeywell
presented by **LARRY SCRUGGS**
2:00 pm, Manistee Ranch

WANTED

Photo Archivist Volunteer
for Manistee Ranch
Call 623-435-0072

Check out our Updated Website:
<http://www.glendalearizonahistoricalociety.org>

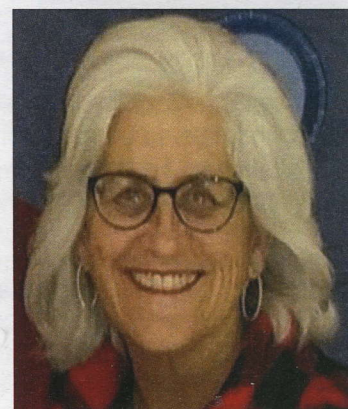
Highlights Inside

President's Message	2
Glendale's Fighting Mayor	2
iCount - 2020	2
Glendale H.S. Alma Mater	2
Glendale Gathers at Bitz-ee's	3
Saving Catlin Court	3
History of Bien Venidas House	3
Women's History Month & Tours	4

The History of Glendale School District #40

Presented by **DAVITA SOLTER**
Monday, March 23, 2020 - 2 PM
HISTORIC MANISTEE RANCH
5127 West Northern Avenue,
Glendale, Arizona

Please enter from 51st Avenue



This is one of the program meetings at **2:00 PM** to allow those who find night driving a little unnerving. The Glendale Elementary School District #40 has been an integral part of Glendale's history, growth and success from nearly the beginning of the community.

Davita Solter is one of Glendale's dynamic and tireless volunteer, who has devoted her career to the education of the area children and today is a part-time Wellness Coordinator in the Glendale Elementary School District #40. Davita will

provide the audience with an interesting and educational review of the districts progress through the years. Please grab someone- well not just anyone- but bring a relative or friend to enjoy this important presentation. Refreshments will be served.



Saturday, February 29 & Sunday, March 3, 2020
10am to 5pm both days, at Historic Sahuaro Ranch
ADMISSION is FREE

Don't miss the delightful and fun 2020 Glendale Folk and Heritage Festival this year. It is two days packed with tons of great folk and bluegrass musicians, blacksmith demonstrations, storytelling, and cowboy poetry. **IT'S FREE!!!!** The Guest House will be open for tours and there are usually over 600 people that tour the house. This means **we really need a lot of help** from members to be guides for a few hours shift. **Please call 623-435-0072** and volunteer for either day. You don't need to be a history expert - **just a nice Glendale smile.**

President's Message



Ron Short, GAHS President, and his wife, Jane
Photo taken:1995, Albuquerque, NM

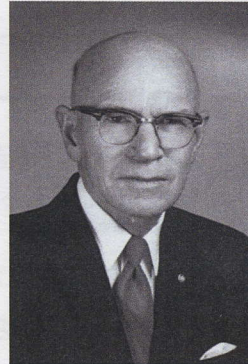
The Glendale Arizona Historical Society has served Glendale for 47 years. The past ten years have seen stability and the strong involvement of individuals who have been active for decades. There are about 190 members in the Society. Nine board members provide guidance and strong volunteer assistance. Some of the active leadership volunteers are now in their 80's. The commitment, love and determination to provide service to their community is there, but over this decade it may become physically more difficult for some of the leaders to continue at the same level of participation. It is critical for the future existence of the Society that younger members of the community join the Society and become active in leadership and volunteering. The Board is appreciative of newer Board members like Jon Froke and Gary Sherwood and look forward to the decade of the 20's.

Glendale's Fighting Mayor

Glendale's first native Mayor was not a quitter but a fighter. Byron Peck served the City of Glendale for 18 years, 1958 to 1962 as Mayor and 14 years as a council member from 1956 to 1958 and 1962 to 1978. Byron was born on 40 acres at 75th and Glendale Avenue on December 10, 1912 He attended and graduated from Glendale elementary and high schools. He and Opal Varney married on June 26, 1938. A self-employed real estate broker and owner of the Byron Peck Realty in Glendale, Byron also owned and operated the Glendale Lockers from 1943 to 1958.

In 1958 when elected as Mayor, Byron found the city never had a plan for growth and no maps of the water and sewer systems. Byron had the foresight to understand that Glendale would grow from a population of 8,000 to over 200,000 by the year 2000. The city needed planning. The result was the city's first planning and zoning ordinance. Another major deed was the passage of a one cent sales tax in 1960, which is a major source of city income now. He championed the building of the Northwest hospital. In 1961, Glendale changed all of the street names and addresses to conform with a regional addressing system. That upset the residents. Then, the state said Glendale did not have

authority to regulate liquor sales and Byron voted to carry out the state mandate. That did him in with the public. When the headline in the newspaper was "Glendale Wet on Election Day", he lost the Mayor's reelection by 12 votes. Byron made major accomplishments moving Glendale forward with considerable growth potential. He developed a joint ownership sewage plant with the City of Phoenix at 91st Avenue and Salt River Basin; established water service boundaries with Phoenix; developed a \$20 million bond issue to expand the city's water and sewer system but through wise planning used only \$4 million and adopted the city charter form of government. Byron even had the foresight to suggest placing the city hall in Murphy Park.



Glendale Native, Byron Peck
City Council Member for 18 years,
4 of which as Mayor

Beyond government, Byron was very active in community organizations as President of the Northwest Hospital Board for 12 years and serving on the Samaritan Health Services Board when Northwest hospital changed ownership, organized and founded the Glendale Boys' Club, was Past President of the Glendale Rotary and Board of Realtors, served on the Chamber of Commerce Board, was a life member of the Glendale Arizona Historical Society, and was a member of the First Southern Baptist Church. Bryon died on October 8, 1982.

iCount·2020

Glendale
ARIZONA

***A Better Glendale
is Counting on You!***

The History of Glendale's Alma Mater

Ainslie Potter began teaching band and chorus at Glendale High School in 1941. He felt the song was too long and thought the school needed something original and short. He finished the composition before he left the music department in 1947 to teach other subjects. In 1954, Glendale students developed enough support to get the song copyrighted. Students said, "This is our song. It was not taken from college music." Ainslie retired from Glendale High School in 1965, but substituted in the Phoenix Union High School District.



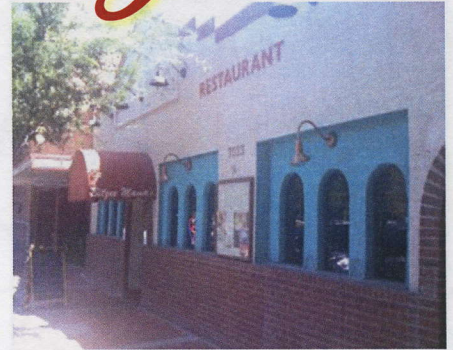
GLENDALE H.S. ALMA MATER

All praises to thee, O Glendale High,
To you our voices raise
Your high ideals make strong your name,
Throughout the world no school can claim
More right to honor, glory fame
Than you, O Glendale High



Where Glendale Gathers

Few businesses have been such an integral part of Glendale's history and daily life as Bitz-ee Mamas Mexican Restaurant located at 7023 N. 58th Avenue. Evelyn Nichol, *Glendale Daily Planet* in 2012 wrote an interesting historical review of this business. The restaurant is a downtown landmark. Gatley's café was created in 1972 on one side of the existing building with a long counter, stools and three small booths. On the counter side was the kitchen with a pass through window. The owner, Carmine Zannelli, his wife and mother-in-law, who he called "Bitz-ee Mamas" operated the restaurant. They enlarged and redecorated the restaurant. They bought the building next door, a shoe shop, and added more booths and a conference area. The kitchen was relocated to the back of the first part of the building. The restaurant renamed "Bitz-ee Mama's", was a favorite meeting place for retirees, businessmen and councilmembers. It was laughingly said that is where city ordinances originated. The owners added music for three nights and dancing. Carmine added a patio and door access but soon closed it due to bird activity.



Carmine and his wife retired and sold the business to Margot Gales and her son Roman. They were from Utah where they had a French restaurant. They introduced French cooking to Glendale, which didn't last long, as locals preferred western cooking. They introduced piano music nights, karaoke and dancing. Two local ladies, Terri and Pat, who owned an accounting and tax preparation business in Floralcroft, always wanted to own their own restaurant. They bought the restaurant, but running two businesses became too much, and they sold the to their waitresses, Lulu, and her friend, Kristine in 2009. Lulu Rodriguez was not new to the restaurant business. She had helped Carmine, Margot, Pat and Terri and became manager for Pat and Terri. It was an easy transition for Lulu and Kristine. The ladies added Sunday morning music, evening music and karaoke. This has been a true hometown business for over 47 years serving outstanding Mexican and American food. Customers become friends and family to Lulu and Kristine.

Saving Catlin Court

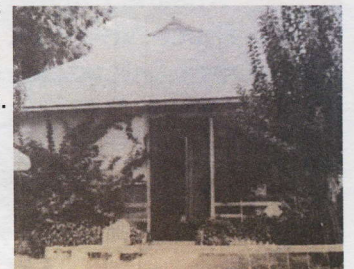


In 1990, Mel Foehner and her daughter Sue Branch set up **The Housewife's Gift Shop** upstairs in the historic 1944 "hurricane proof" Summers House at 7123 N. 58th Drive. To their horror, they saw a nearby historic house being torn down for construction. The ladies got a petition to stop the demolition of another historic house. Branch bought the house and opened Miss Florence's Mercantile in the Glendale Catlin Court Shops District. This special Catlin Court PAD was established in early 1990 after a large group of concerned citizens wanted to save the

past by establishing a specialty retail area of four blocks that extends from 59th to 57th Avenue and from Palmaire to Myrtle Avenue. This area contained many historic homes that would be torn down for future commercial development. The new zoning's primary objective was to provide for specialty retail, with some office use. There were design standards for the historic houses in the PAD. Branch and Foehner enlisted friends and family to help establish Aunt Pittypat's restaurant on the first floor of the Summers house, since Martha Campbell had moved the Spicery to the Messinger house at 59th and Palmaire Avenue. The ladies decorated the first floor to look like a museum, and had an idea of preserving a vacant church building to use as a visual-arts and performing arts center. They even developed a two-inch thick study for the project. The City of Glendale later demolished the building, since the cost of restoration was excessive.

Historic Bien Venidas House

This 1913 one-story wood frame house, built by J. M. Marks at 6825 N. 55th Drive, had an important historic significance for Glendale. It was the "Welcome" house for the "Americanization" of the Mexican population during the early 20th century. Mr. and Mrs. Hugh Campbell leased the house to Miss Elsie Elliot, Baptist missionary. Religious services, Red Cross meetings and night school were held there. The Interchurch World Movement provided the programs. The increasing immigration of "alien races" in the western United States during this time became a major concern of American citizens. The mixing of Anglo and Mexicans through various programs sought to resolve these problems. The Mexican Baptist Mission house is significant for its association with historical attempts to integrate the local Mexican and American cultures. This historic building was demolished for a commercial development.



This newsletter is a publication of the
Glendale Arizona Historical Society

PO Box 5606

Glendale, AZ 85312-5606

The AHS Office is located in the
Sahuaro Ranch Guest House

It is published eight times per year
monthly October through May

AHS Phone Numbers

Guest House Office 623.435.0072
Manistee Ranch Office 623.931.8848
Newsletter Editor 602.770.8202

AHS E-mail

General info glendaleahs@gmail.com
Newsletter Editor gailgcmeyers.com

Visit our website

www.glendalearizonaahs.org

Like us on Facebook

Your Governing Board of Directors

Ron Short.....President
Catherine Morgan.....Vice President
Marty Cole.....Treasurer
Jessica Koory.....Secretary
Jon Froke, AICP.....Director
Gary Sherwood.....Director
Martha Dennis.....Director
Nelda Crowell.....Director
Bill Greb.....Director

Rosemary Lynch.....Director Emeritus

The Glendale Arizona Historical
Society is designated as a Certified
Historical Society by the Arizona
Historical Society.
All Rights Reserved.

Our next membership event is

MONDAY, MARCH 23, 2020

History of

Glendale School District #40
presented by DAVITA SOLTER

Please enter the driveway to Manistee Ranch
from 51st Avenue, just south of Walgreens.
Proceed through the parking lot, and continue
through the open vehicle gate. Then keep
right, and park along the dirt driveway.

Our Newest Members

Kristine Parker
Bruce Newmark
Frank & Jean Boyd



Glendale Arizona Historical Society
PO Box 5606
Glendale, AZ 85312-5606

ADDRESS SERVICE REQUESTED

Nonprofit Org
US Postage Paid
DMLS



Women's History Month

Congress passed Pub. L. 100-9 in 1987 establishing March as
Women's History Month to celebrate the vital role of women in
American history. Women have been and are critical to the
development and operation of the City of Glendale. The City of
Glendale Parks and Recreation staff at Sahuaro Ranch offer free tours
of the Main House. The Glendale Arizona Historical Society also conducts tours of historic
Manistee Ranch from October to May.

SAHUARO RANCH 1895 MAIN HOUSE, 9802 N. 59th AVE, GLENDALE, AZ

- ♦ **FREE TOURS** of the Main House September-July: Fridays & Saturdays: 10 am to 2 pm.;
Sundays: 1 pm to 4 pm, (Closed August and on holidays, Thanksgiving weekend, December 24,
25, 31 and January 1.) Please call 623-930-4201 for group tours of 10 or more.

SAHUARO RANCH 1898 GUEST HOUSE & 1887 ADOBE HOUSE, 9802 N. 59th AVE, GLENDALE, AZ

- ♦ **FREE TOURS** of the Guest House October – May: Sundays: 1 pm to 3 pm, (except holidays
and during weddings).
- ♦ **FREE TOURS** of the 1887 Adobe House during festivals and with prior arrangements.
Call 623-435-0072 for more information, or for group tours.

1897 MANISTEE RANCH, 5127 W. NORTHERN AVE (enter from the parking lot on 51st Ave).

- ♦ Tours are conducted by the Glendale Arizona Historical Society docents from October through
May: noon to 4 pm (last tour starts at 3 pm). Fees: Adults \$5, Seniors \$4, Veterans, \$4, and
children ages 6-16 \$1. **GAHS MEMBERS ARE FREE.** The 2019-20 tour dates are the 1st and
3rd Saturday of the month: March 7 and, 21, 2020; April 4 and 18, 2020 and May 2, 2020.



Sahuaro Ranch Adobe House



Sahuaro Ranch Guest House



Sahuaro Ranch Main House



Manistee Ranch House