



Glendale Arizona Historical Society

"preservation of the past"

NOVEMBER 2019 NEWSLETTER

Volume 40, Issue 7

UPCOMING EVENTS

at a glance
Please Save These Dates

SATURDAY, NOVEMBER 16, 2019

Annual GAHS Picnic

11:00 AM to 1:00 PM
Manistee Ranch

MONDAY, DECEMBER 16, 2019

Annual Christmas Party

7:00 PM
Manistee Ranch

MONDAY, JANUARY 27, 2020

Annual Potluck & Election

6:00 PM
Manistee Ranch

MONDAY, FEBRUARY 24, 2020

History of the World Wildlife Zoo

presented by **MICKEY OLLSON**
7:00 PM
Manistee Ranch

Highlights Inside

President's Message	2
Monotype's Curious History	2
Dairy...Mall...Campus	2
Volunteerism at its Best	3
Woman's Club Restoration	3
Good Time to Tour the Past	4

Glendale Arizona Historical Society

ANNUAL PICNIC

Saturday, November 16, 2019

11:00 AM - 1:00 PM

Manistee Ranch, 5127 W Northern Avenue

(enter off 51st Avenue)



The summer heat is gone and the weather is great for an **"OLD FASHIONED GLENDALE PICNIC."** Bring an entrée, salad, side dish, bread or dessert to share with the other picnickers. Invite a guest or two to attend the picnic. The Board of Directors will provide hot dogs and beverages. The "Bill Greb Wranglers" will provide live country music, including Marty Robbins songs. During the picnic, the house, office, garage and granary will be open for touring. It is rare to have all the buildings open.

JOHN PORTER SANDS, SR INTERNSHIP

Jennifer E. Sands has funded the John Porter Sands, Sr Paid Internship for history students at the West campus of Arizona State University. Headed by Dr. Eduardo Pagán, a history professor at the West campus, the purpose of the endowment is to culturally enrich the West Valley through oral histories and historical research. The first Sands Intern is Myles Lewallen, a history student in the New College of Interdisciplinary Arts & Sciences who is working directly with Jennifer's husband, Charles Sands, and Dr. Pagán. The initial interviews will be centered around the Manistee Ranch, a tremendously important Glendale landmark. The first interviewee was Louis "Buzzard" Sands IV, who was raised on the ranch and now owns the Sands Chevrolet car dealerships. The mission of this first interview is to document early experiences in the West Valley, and the role that the Manistee Ranch played in so many people's lives. The Sands family was very influential in the early stages of Glendale, and the West Valley as a whole. These interviews will help preserve the history of Glendale, Arizona and the stories from the interviewees who played a large part in the cultural development of our city and the West Valley.



Charlie Sands, Louis "Buzzard" Sands IV & Myles Lewallen



Ron Short, GAHS President
Photo: Albuquerque, NM, 1995

President's Message

The preservation and promotion of Glendale's history is the guiding goal of the society. The society provides two museums, historic exhibits, tours, program meetings, and eight monthly newsletters to promote awareness. The society has been active and in the forefront in urging preservation of Glendale's wonderful historic resources. The society worked with the City of Glendale and the

Arizona Christian University to preserve Thunderbird Field #1 specifically the air control tower, founder hall and the hangar.

The society urged the City of Glendale to preserve the historic Glen Lakes Golf Course. Considerable time was spent researching options to keep the golf course in operation. The City decided to offer the 43 acres for \$6.5 million. The resulting land use will be single-family residential and perimeter parking strips.

Most of the summer the society engaged the City of Glendale to retain the Glendale Memorial Park Cemetery and it's \$5.8 million Perpetual Care Fund. The society indicated the cemetery is perhaps the most important historic site in the community with over 16,000 early settlers, mayors, councilmembers, community leaders, and citizens and should remain under city control. The City of Glendale proposes to sell the cemetery and give the private buyer \$3.8 million of the perpetual care fund and keep \$2 million to use for other purposes. History does matter.

The Curious History of the MONOTYPE



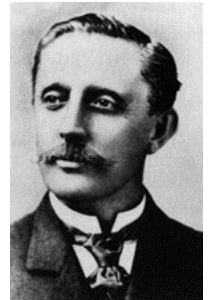
Our "Curious" Monotype

What does Manistee Ranch or Glendale have to do with the Monotype machine? Not much! The 1900 granary at Manistee Ranch contains many antique pieces of farm equipment from the Sands farming operation. However, sitting at the front door on a palette, all bound up for transport, is a huge complicated looking machine labeled Monotype. It has belts, melting pot, gadgets and motors. No one seemed to know where it came from - not even Charlie Sands. A call and photo to Carol St. Clair in Tacna, Arizona solved the mystery. Chuck St. Clair, Carol's husband, was given the machine after the Society took possession of Manistee ranch in 1996. He placed it in the granary.

There is a history to the Monotype machine. Tolbert Lanston invented the Monotype and patented it in 1887. This is a type-setting machine that saved labor cost. There were

two machines to make lead type for printing.

One machine would produce two paper tapes, similar to a player piano, which would control the second machine to produce type. John Sellers Bancroft helped to improve the machine. Other companies took over the production, and the inventor, Tolbert Lanston died penniless in 1913. The machine was manufactured up to 1960 when new technology replaced the Monotype. There are excellent videos on You Tube that demonstrate the operation of the Monotype.



Tolbert Lanston,
inventor of the
Monotype,
patented in 1887

from DAIRY . . . to MALL . . . to CAMPUS



Dairy, Early 1900's



Dairy Logo



Park Central Mall, 1956



Creighton University
Health Services Campus
coming in 2021

The **Central Avenue Dairy** was started in the early 1900s and was a very successful business delivering milk to the community. It was located between 3rd Avenue and Central Avenue north of Thomas. The City of Phoenix municipal boundary stopped at Van Buren. So the Dairy was in the countryside. The Dairy won awards for the quality of its products. The photo shows the operation when milk was delivered by a horse team. In the early 1950s the growth of Phoenix created new forms of enclosed shopping experiences other than downtown. Two brothers, Ralph and A.J. Burghacher, bought the 46 acre dairy in the 1950's for development. The first Phoenix shopping mall broke ground on

November 17, 1955 and opened for business in 1957 on the site of Central Avenue Dairy. The community was excited to have this new shopping form. The Park Central mall was successful until enclosed malls were built. The open-air mall lost its tenants in the late 80s and early 90s. The owners did not modernize. There was some transforming to a mixture of office and dining keeping half of the original buildings. Now another transformation will take place. Creighton University Phoenix Health Services Campus will create an initial 200,000 square foot classroom building and dorms for 800 students. The facility will be in operation by 2021.

Volunteerism at its best

John Geurs along with his wife **Paulette** have adopted Manistee Ranch as their volunteer project. They have worked hard with Board member **Bill Greb** to improve the historic orchard, clearing out tons of brushes and debris. The City of Glendale Parks and Recreation Department has been very helpful in providing roll off dumpsters and removing the debris. John and Paulette took on the task of improving the Manistee Ranch Rose Garden with tutoring by and donations of rose bushes from **Bill and Candy Shepard**. Then, John and Paulette decided the arbor was weak and made repairs to keep it standing. They will dig and pour foundations for all vertical posts.

The most amazing volunteer project was a collaboration with Larry Rovey and John Geurs in fixing the flood irrigation in the western portion of Manistee Ranch. Larry Rovey volunteered his tractor and workers to grade the western section and build up berms so the water doesn't flow onto the adjoining property. The grading was done on a Saturday. Monday John planted the grass seed, and Tuesday the water delivery was made. As needed, John does small repair jobs on the house. He discovered the poor condition of the second story windows. Scott GoodBallet was hired to make extensive repairs. The Board of Directors is greatly appreciative of John and Paulette Geurs for their volunteerism at Manistee Ranch and to others who help maintain this historic gem for the citizens of Glendale.



Larry Rovey Grading West Manistee



Repaired Gate



John Geurs Planting Grass Seed



Proper Irrigation after Repairs

GLENDALE WOMAN'S CLUB ~ CLUBHOUSE RESTORATION

The Glendale Woman's Club has been an integral part of community life for 117 years. Letti Jack, wife of E.E. Jack, superintendent of Rancho del Higo Ranch and later Sahuaro Ranch, formed the "Self Culture Club" in 1902 as a literary organization. The ladies met in homes, but by 1907, there were 50 members. The group was given a lot, and they sold that for \$500 and started a campaign selling \$5 shares to build a clubhouse. In 1912, the Woman's Club was chartered and built the Craftsman Style Bungalow. The building cost \$2,947, was dedicated in 1913, and became the largest meeting hall in the town of Glendale. Therefore, town meetings, dances, concerts, weddings, and church services were held at the clubhouse.

The women of Glendale were very effective in creating a strong cultural environment. They held the first flower show, helped to create the historical society, supported the library and acquisition and development of Thunderbird Park, sponsored the Junior Woman's Club, and the Community Improvement Program of cleanup and beautification, for which the club received two national awards, and began what would become the Glendale Arts Council. The club grew to nearly 160 members and currently has 60 members.

After 100 years of use the historic clubhouse, which was listed on the National Register of Historic Places in 1989, showed its age. Outside walls were deteriorated, there were floors sinking, and

the plumbing, air conditioning and electrical were not functional. The kitchen was not in good shape. The club had very little money in their bank account. Other woman's clubs in Arizona and the nation had gone through the same problems and many of their historic buildings were sold. The Board of Directors applied repeatedly for a Glendale Community Development Block Grant for funds to restore the building. Finally, they were awarded funds that amounted to \$317,578 for repairs through the Block Grant program. The Board hired Scott GoodBallett of G & G Speciality Contractors who did an outstanding job in restoring one of Glendale's most revered landmarks. The members of the Glendale Woman's Club are to be congratulated for taking on a seemingly impossible task and being so successful.



Front Exterior after Restoration



Exterior before 2019 Restoration



Rear Exterior after Restoration



Kitchen after Restoration

This newsletter is a publication of the
Glendale Arizona Historical Society

PO Box 5606
Glendale, AZ 85312-5606
The GAHS Office is located in the
Sahuaro Ranch Guest House

It is published eight (8) times per year,
monthly — October through May

GAHS Phone Numbers:
Guest House Office: 623.435.0072
Manistee Ranch Office: 623.931.8848
Newsletter Editor: 602.770.8202

GAHS E-mail:
General Info: gahs73@gmail.com
Newsletter Editor: gcmeyers@cox.net

Visit our Website:
www.glendalearizonahistoricalsociety.org
Like us on Facebook

Your Governing Board of Directors

Ron Short.....President
Catherine Morgan.....Vice President
Jessica Koory.....Secretary
Marty Cole.....Treasurer
Nelda Crowell.....Director
Martha Dennis.....Director
Jon Froke.....Director
Bill Greb.....Director
Rosemary Lynch.....Director

The Glendale Arizona Historical Society is designated as a Certified Historical Society by the Arizona Historical Society. All Rights Reserved.

***Our next membership event is
Saturday, November 16, 2019***

Annual GAHS Picnic

11:00 AM to 1:00 PM
Manistee Ranch

Please enter the driveway to Manistee Ranch from 51st Avenue, just south of Walgreens. Proceed through the parking lot, and continue through the open vehicle gate. Then keep right, and park along the dirt driveway.

WELCOME

to our two newest members:
Ted and Linda Christy

WE'LL MISS YOU, CATHERINE

We say goodbye to lifetime member Catherine Terrell, who passed away on September 7, 2019 at the age of 102.

Catherine was active in the early years of the Glendale Arizona Historical Society.

Glendale Arizona Historical Society
PO Box 5606
Glendale, AZ 85312-5606

Nonprofit Org
US Postage Paid
DMLS

ADDRESS SERVICE REQUESTED

A GOOD TIME TO TOUR THE PAST

November is a terrific month to take a tour through Glendale's exciting past. The City of Glendale Parks and Recreation staff at Sahuaro Ranch offer free tours of the Main House. The Glendale Arizona Historical Society not only conducts tours of the Sahuaro Ranch Guest House and Adobe House, but also provides them at historic Manistee Ranch from October to May.

SAHUARO RANCH 1895 MAIN HOUSE, 9802 N. 59TH AVE, GLENDALE, AZ

FREE TOURS of the Main House September-July: Fridays & Saturdays: 10 am to 2 pm.; Sundays: 1 pm to 4 pm, (Closed August and on holidays, Thanksgiving weekend, December 24, 25, 31 and January 1.) Please call 623-930-4201 for group tours of 10 or more.

SAHUARO RANCH 1898 GUEST HOUSE & 1887 ADOBE HOUSE, 9802 N. 59TH AVE, GLENDALE, AZ

FREE TOURS of the Guest House October – May: Sundays: 1 pm to 3 pm, (except holidays and during weddings).

FREE TOURS of the 1887 Adobe House during festivals and with prior arrangements. Call 623-435-0072 for more information, or for group tours.

1897 MANISTEE RANCH, 5127 W. NORTHERN AVE (enter from the parking lot on 51st Ave).

Tours are conducted by the Glendale Arizona Historical Society docents from October through May: noon to 4 pm (last tour starts at 3 pm). Fees: Adults \$5, Seniors \$4, Veterans, \$4, and children ages 6-16 \$1. GAHS MEMBERS ARE FREE. The 2019-20 tour dates are the 1st and 3rd Saturday of the month on the following dates: November 2nd, and December 7th and 21st.



Sahuaro Ranch Adobe House



Sahuaro Ranch Guest House



Sahuaro Ranch Main House



Manistee Ranch House