



Glendale Arizona Historical Society

"preservation of the past"

APRIL 2018 NEWSLETTER

Volume 39, Issue 4

UPCOMING EVENTS

at a glance

Please Save These Dates

"The 1924 Sands Family Trip to Taos, New Mexico"

Presented by Dr. Tricia Loscher
Monday, April 23, 2018 at 2:00 pm
Manistee Ranch

"Restoring a Historic Home"

Presented by Tim Quinn
Monday, May 21, 2018 at 7:00 pm
Manistee Ranch

Hickman Egg Ranch History

Gertie and Bill Hickman
October 22, 2018 at 7:00 pm
Manistee Ranch



Highlights Inside

President's Message	2
2 Great Glendale Festivals	2
Naming Glendale	2
Mecham as Governor	3
New Grade School	3
Ranch Tour Season Closing	4

DR. TRICIA LOSCHER
presents

"The Sands Family 1924 Tour to Taos"

at the next GAHS membership program on
Monday, April 23, 2018 at 2:00 PM, Manistee Ranch (enter off 51st Avenue)



Dr. Loscher, Chief Curator of the Scottsdale Museum, has a doctorate in Art History from the University of Arizona in Tucson. This will be an excellent opportunity to learn more about the Sands family from an outstanding history professional.



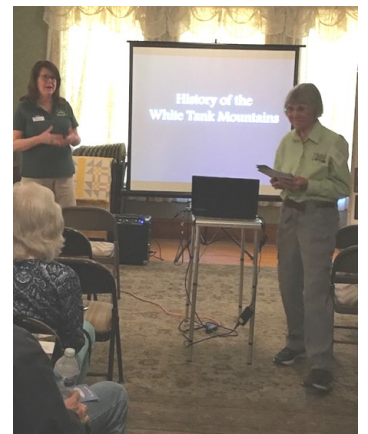
Pictured are Jessica Koory, Peggy Vise, Carol St. Clair and Catherine Morgan, "passengers" in an interactive display of a model of a 1923 Lincoln Touring Sedan, the type of car used by the Louis and Frances Sands family on their 1924 trip to Taos, New Mexico. This was a part of a 2017 exhibit titled **The Taos Society of Artists** which was featured at the Western Spirit: Scottsdale's Museum of the West, along with a camera and journal also used by the Sands family during that trip.

Dr. Tricia Loscher's presentation will focus on the Sands family and the Taos Society of Artists. Bring a guest to this delightful program. Refreshments will be served.

The Beautiful White Tank Mountains

The members and visitors on February 26, 2018 at 2 pm were treated to a fascinating presentation on the White Tank Mountains history. Catherine Morgan provided the introduction of speaker Karen Krause. Karen is a resident of Waddell who has done considerable research on the area. She talked about the physical features, early human settlement, trail blazers, freight haulers, minors, ranchers and of course outlaws. Oh, she even revealed what happen to the "tank."

Thanks to Marty Cole and Martha Dennis for providing the refreshments.



President's Message



Ron Short, President
GAHS Board of Directors

The Society has been very active the past few months with the Potluck, White Tank Mountains program and the fun "Where the Boys Are" program with Councilmember

Ian Hugh and Jerry Eldridge.

The Board members and others have volunteered to facilitate 11 weddings in March and many more for April. In February Martha Dennis organized 34 volunteers as docents for both the Antique Engine and Tractor Days and the Glendale Folk and Heritage Event. There were 1,202 visitors through the two buildings, during the events. Also, Martha Dennis has coordinated many special school or group tours working with the City of Glendale staff at Sahuaro Ranch.

Bill Greb has worked with John Geurs in cleaning up the Manistee Ranch Orchard. Bill helped PSI Security to install eight cameras at Manistee Ranch. Some Board members will be trained to monitor the equipment. There are many more projects that need to be accomplished to maintain Manistee Ranch, subject to donations.

While I have been sick the past several months, your cards and well wishes have been deeply appreciated. My big thanks go to both Martha Dennis and Marty Cole doing a lot of extra work during this recovery time. Thanks to Gail Meyers who has kept us on track with the newsletters.

The Sahuaro Ranch Master Plan update is in progress. Public Meetings will be held in May 2018. This is a critical plan to form the future of Sahuaro Ranch.

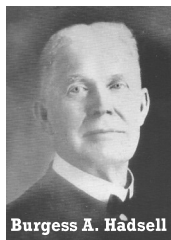
Old Fashioned GLENDALE Gatherings

In February the City of Glendale held two major events at historic Sahuaro Ranch in Glendale. The Antique Engine and Tractor Days ran from February 10-11. Great turnout with the Society providing tours of the Guest House. The Glendale Folk and Heritage Festival was February 24 and 25. Both events allowed the Society to display and answer questions about the Guest House and Adobe House. Hundreds of visitors toured both buildings during the two events. The Society is very appreciative of Martha Dennis coordinating the volunteers and a huge thank you to all of the many volunteers that made it an enjoyable and educational time. This is an important part of our Mission in making people aware of Glendale's history. During Tractor Days attendance there were 289 Guest House and 202 at the Adobe House for 591. Volunteers included Martha Dennis, Marty Cole, Robin McKnight, Jack Rose, Anne Owens, Karl Dennison, Rosemary Lynch, Nelda Crowell, Tracy Marsh, Leslie Newcomb, Jessica Koory, Lannie Dewberry, Davita



Solter, John and Paulette Geurs, Kale Amparon and Sarah Trone.

The Folk and Heritage Festival had 360 visitors at the Guest House and 245 at the Adobe house for a total of 605. The volunteers for these tours included Martha Dennis, Marty Cole, Sahah Trone, Davita Solter, Brian Eldridge, Sharon Eldridge, Karl Dennison, Tracy Marsh, Kale Amparon, Courtney Loveridge, Theresa Parker, John and Paulette Geurs, Leslie Newcomb, Lannie Dewberry and Robin McKnight.



Burgess A. Hadsell

Who Named GLENDALE?

How did our town get the name Glendale and who named it? That would be Mr. Burgess A. Hadsell.

Founding father W. J. Murphy, along with Clark Churchill, visited Hadsell in Chicago in 1885 with the hope that Mr. Hadsell and his "Band of Bretheren" would move here.

Murphy offered to sell him ten sections under the Arizona Canal at \$10.50 per acre and a banker named Sherman offered Hadsell a section of land as

a gift. Hadsell refused both offers. Six years later in 1891 Mr. Hadsell, his family and the Brethren did settle here. He obtained a deed to the town site, which he named Glendale. Once he sent word back to Chicago, more Brethren migrated to Glendale. Mr. Hadsell filed the first subdivision in 1892 of thirty twenty-acre lots called the Hadsell Addition.

The tall palm trees on the west side of 59th Avenue between Orangewood and Hayward Avenues were planted in 1895 in the Hadsell Addition. This is considered the founding of

Glendale. These lots had deed restrictions prohibiting the sale of liquor.

The first house in Glendale is estimated to have been built in 1892. Mr. Tom Franklin built the first restaurant and hotel on West A Street in 1892. Glendale was very prosperous until orchards were destroyed when the Arizona Dam collapsed. For many years after that disaster, Glendale remained a large barley field, except for the Orchard Addition. But undaunted, business and residential development grew eastward.

Glendale Businessman Evan Mecham Becomes Governor

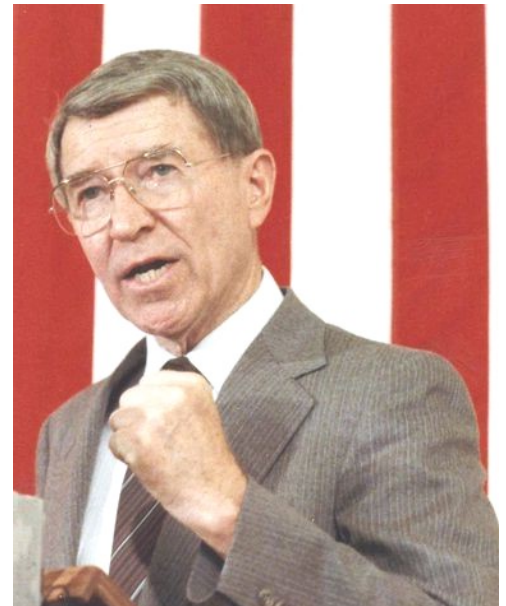
Evan Mecham, who made his mark on Glendale and the State of Arizona, was born May 12, 1924 and grew up in Utah. He attended Utah State University, Creighton University and Arizona State University majoring in Business Management and Economics. Evan fought in WWII as fighter escort with the 8th Air Force. His P-51 Mustang was shot down over Germany. Mecham, age 20, was injured bailing out of the plane, captured and held as a POW until liberated by Patton's Third Army. Evan was awarded the Purple Heart and Air Medal. He spent six weeks in a hospital in France.

Returning home, he married his high school sweetheart Florence Lambert on June 11, 1945. He was successful in running a Pontiac dealership in Ajo, AZ and then moved the franchise to Glendale and became the first dealership on Glendale's "auto row."

Evan was politically active, being elected to the state senate in 1960. He unsuccessfully ran for U.S. Senate and Governorship, but was elected Governor in 1986. He took office January 6, 1987.

Evan was an outsider and he had a bumpy political ride. Governor Mecham was able to strike excellent trade deals, help with drug abuse prevention and eliminated a \$157 million dollar budget deficit.

However, poor relations with the legislature, social mistakes and the canceling of the MLK holiday set the stage for claims of his misusing government funds. He was impeached by the House on February 8, 1988, followed by conviction by the Senate for misuse of public funds on April 8, 1988. Rose Mofford became acting governor. He was taken to trial with criminal charges, but acquitted of all six charges on June 20, 1988. Governor Mecham was very active in the LDS church throughout his life in many leadership roles. Evan's personal convictions included a strong belief in the constitutional foundations of States Rights and personal freedoms. He lived by the phrase "Failure never comes until you stop trying." Evan died on February 21, 2008 at age 83.



"On the hottest day ever recorded in Phoenix, June 26, 1990, I was walking west on Washington Street in the afternoon, dressed in a three-piece suit. Nobody was on the streets. But, I saw a figure walking towards me. It was former Governor Mecham. We stopped, shook hands, and talked briefly and went on our way. It was 122 degrees."

Ron Short

New Grade School In Glendale

In 1938 there became a need for another grade school to be located in the Mexican neighborhood at Fifth Avenue and Grand Avenue. The enrollment was rapidly raising and teachers were assigned 10-15 more children than appropriate. It was proposed to pass a \$55,000 bond issue combined with a \$45,000 federal WPA grant to buy 10- acre site and construct and equip the school. The first six grades would attend the new school, with the upper grades to attend in the present school. There would be ten class rooms with a large combination auditorium and gymnasium. The school would be used as a community center for the Mexican community.



There were 223 votes cast in the bond election with the issue winning 190-33. There were delays with the construction due to problems clearing title to the land and then issues working with WPA. Construction did not start until early fall of 1940. The construction was further delayed due to war conditions. The dedication of the school did not occur until 1942 with Harold W. Smith as principal. The school architecture and layout combined the best features of the unit system concept used by Unit 1. Any room can be operated or closed without interfering with other rooms. The building is built with reinforced concrete walls. The school had two large wings so all classrooms have two sides to open air, and there is a sheltered outside passageway. The auditorium stage is designed to allow all seating to be within the building or on the outside patio.

This newsletter is a publication of the
Glendale Arizona Historical Society

PO Box 5606

Glendale, AZ 85312-5606

The GAHS Office is located in the
Sahuaro Ranch Guest House

It is published eight (8) times per year,
monthly — October through May

GAHS Phone Numbers:

Guest House Office: 623.435.0072

Manistee Ranch Office: 623.931.8848

Newsletter Editor: 602.770.8202

GAHS E-mail:

General Info: gahs73@gmail.com

Newsletter Editor: gcmeyers@cox.net

Visit our Website:

www.glendalearizonahistoricalsociety.org

Your Governing Board of Directors

Ron Short.....President

Tracy Marsh.....Vice President

Jessica Koory.....Secretary

Marty Cole.....Treasurer

Martha Dennis.....Director

Catherine Morgan.....Director

Bill Greb.....Director

Rosemary Lynch.....Director

Nelda Crowell.....Director

The Glendale Arizona Historical Society is designated as a Certified Historical Society by the Arizona Historical Society. All Rights Reserved.

Our next member get-together is:

"The Sands Family Taos Trip"

Presented by Dr. Tricia Loscher

Monday, April 23rd at 2:00 pm

at Historic Manistee Ranch

Please enter the driveway to Manistee Ranch from 51st Avenue, just south of Walgreens. Proceed through the parking lot, and continue through the open vehicle gate. Then keep right, and park along the dirt driveway.

Welcome to our newest member:

Connie Wittig

We bid farewell to 2 members who recently passed away:

Dorothy Doyle

Betty Jane Rugis



Glendale Arizona Historical Society
PO Box 5606
Glendale, AZ 85312-5606

ADDRESS SERVICE REQUESTED

Nonprofit Org
US Postage Paid
DMLS

Enjoy Both Ranches Before the Tour Season Closes

April and the first Saturday of May are the last opportunity to tour the beautiful 1897 Manistee Ranch house, granary office and immediate grounds at 5127 W.

Northern Avenue (enter off of 51st Avenue). The date palm tree area is a public park and Manistee Ranch is privately owned by the Glendale Arizona Historical Society. Manistee Ranch Tours are on April 7 and 21 and May 5, 2018 from noon to 4 pm with the last tour at 3 pm. The fee is \$5 for adults, \$4 seniors and \$1 for ages 6-16. GAHS Members are free. The Board has established a \$100 annual Commercial Photography permit for use

on the Society property. Please call 623-435-0072

Sahuaro Ranch is located at 9802 N. 59th Avenue, owned by the City of Glendale and open daily. The Main House (1895) has scheduled free tours on Fridays and Saturdays from 10 am – 2 pm and Sunday from 1pm to 4 pm. Call 623-930-4201 for group tours.

The Glendale Arizona Historical Society provides free tours of the Guest House (1898). On Sundays from 1 pm to 3pm unless a wedding is scheduled. The Adobe House (1887) can be toured during festivals or by prior arrangement.



Sahuaro Ranch Main House



Sahuaro Ranch Guest House



Sahuaro Ranch Adobe House



Manistee Ranch House