



# Glendale Arizona Historical Society

*"preservation of the past"*

APRIL 2017 NEWSLETTER

Volume 38, Issue 4

## UPCOMING EVENTS

at a glance

Please Save these Dates

**RENEW**  
Your GAHS Membership  
**TODAY**

**LINDA IRICK**

### "Fred Harvey Girls"

Monday, April 24 at 2pm  
Manistee Ranch

**ANN OWENS**

"1992 Marty Robbins Tribute"

Monday, May 22, 2017  
Manistee Ranch

**HAVE A GREAT**  
**SUMMER**  
**BE BACK THIS FALL**

## Highlights Inside

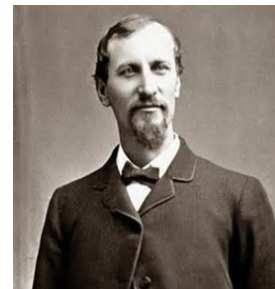
President's Message	2
Messinger's Romance	2
Historic Preservation Tour	2
John Long Makes History	3
History of our Airport	3
Ranch Tour Season Closes	4

## FRED HARVEY GIRLS



The Glendale Arizona Historical Society will hold the **Monday, April 24, 2017 meeting at 2:00 PM at Manistee Ranch, 5127 West Northern Avenue (enter off of 51<sup>st</sup> Avenue)**. This is the only **AFTERNOON** meeting of the year to encourage those members and interested people who don't drive at night to attend a fascinating trip to the past and learn about the "**Fred Harvey Girls**" from GAHS member **Linda Irick**. The ad read, WANTED: "Seeking clean-cut, well-mannered, attractive women between

18 and 30 to come and be waitresses." The pay was \$17.50 a month, plus tips. Those women hired received a train ticket west and room and board. Train travel in the 1880's was not pleasant. Fred Harvey in 1875 worked out a deal with the Atchison, Topeka and Santa Fe Railway to open up fine restaurants for the train travelers. In 15 years Fred opened up 84 restaurants. The Harvey Girls were an instant success. **Linda Irick** will tell you the stories of the Harvey Girls and maybe you will even see a Harvey



**Fred Harvey**

Girl in person with the starched black and white uniform. Members, bring a guest and interested parties are welcome. Refreshments will be served.

## Bisbee Mass Deportation Personal to Speaker

Nelda Crowell presented a chilling, but intriguing talk about the July 12, 1917 mass deportation in Bisbee, AZ at the February 27, 2017 GAHS meeting. She gave the background of the times with WWI, labor unions, national labor strikes, Germany's promise to give Texas, New Mexico and Arizona back to Mexico if they would invade the southwest. The "good"

sheriff led a posse of over 2,000 deputized men that went door to door and rounded up 1,300 striking miners and others. They were placed in dirty cattle cars and took 200 miles east to New Mexico and dumped. Nelda's mother, then 17 years old, stood at their door and told the gunmen, "This is a free country and you are not going to take my father and brother."

They did not take them. Nelda was asked, "What happened to the miners? Did they return to Bisbee?" Nelda answered, "They didn't."

*(Only a handful of deportees ever returned to Bisbee.)*

March  
Speaker  
Nelda  
Crowell



# President's Message



*Ron Short, President  
Board of Directors*

The summer break is nearing and the Society has experienced many activities that have enriched the knowledge of residents and visitors about Glendale's history. In August the entire Board of Directors will meet to plan the future year for the Society as to programs, events, tours, field trips, newsletter, exhibits, weddings, repairs, budget, memberships, accessions, oral histories, research library, rose garden, website, marketing materials, volunteers, festivals, Manistee Ranch, Sahuaro Ranch Master Plan, photo collection, grants, donations and the long range future of the Society. More people need to step forward to help grow the membership and leadership of the Society. Recently, Tracy Marsh a young lady dedicated to preservation of the past stepped forward as did Catherine Morgan and Carol Hook to provide leadership. The Society has been in existence for 44 years with an office at Sahuaro Ranch for 30 years. This August the Annual Board retreat will indeed map out a long range future of the Society and insure its long term service to the citizens of Glendale.

## The Romance of Victor Messinger

Victor Messinger, one of Glendale's early businessmen and community supporters stayed single for many years, but even he got shot in the heart by cupid. Victor was born January 19, 1873 in Illinois to a family active in banking and farming. He went to grammar school in Illinois. He moved to Phoenix, AZ in 1887 with his family and attended Phoenix High School for two years. He then went to Knox Academy in Galesburg, Illinois for one year and completed his education at Leland Stanford University in 1891. He started work as a helper in the H.W. Ryder Lumber Yard in Phoenix before college and after graduation was rehired and sent to Glendale to

operate the Ryder Lumber and Building Material business located where the Crystal Ice Plant used to stand. The first Santa Fe railroad car of merchandise to the Valley was to Ryder's in Glendale. Victor started the first library in Glendale using his own books and that of others to loan out. He became the first postmaster in Glendale and in 1910 the first town clerk for the Town of Glendale. He was a businessman, town clerk and postmaster - a busy person with little time for romance - or was he? Victor was instrumental in securing the gift of the site for the Women's Club. He was on the speaking program for the dedication and it was here that Victor met Miss Lillie



May Ellerd, a winter visitor to Glendale, who formed close ties of friendship among those who learned to appreciate her rare qualities and unusual accomplishments. Victor and Lillie May were married August 23, 1924 in Clovis, New Mexico. Victor and Lillie constructed a home on a five - acre parcel immediately joining the city limits on the south, which they called "Larkhaven".

## 2017 Glendale Historic Preservation Tour

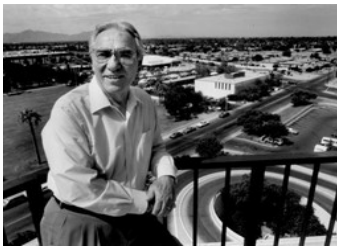


Glendale has ten historic districts and over 500 buildings listed on the National Register of Historic Places. The Glendale Historic Preservation Commission will hold its **14th Annual Historic Preservation Tour on Saturday, May 6, 2017.**

**Boarding** of the motor coaches (two 45 passenger busses with restrooms) **will be from 8:30 a.m. – 9:00 a.m. at the Glendale Civic Center, 5750 W. Glenn Drive, Glendale, AZ.** The motor coaches will leave at 9:00 a.m. to take the participants for a trip back into Glendale's glorious past and glimpses of its future. The bus will return to the Glendale Civic Center at 12:00 p.m. There will be the opportunity to tour inside an historic home and see unique historical

sights rarely thought of. Please make reservations by calling Alexandra Shaw with the City of Glendale Planning Division at (623) 930-2831. Light refreshments and snacks will be served and, of course, a rest stop is planned. The tour is sponsored by the Glendale Arizona Civic Pride Ambassadors.





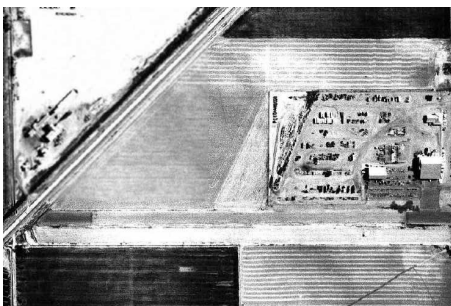
# Glendale's HISTORY MAKER

John Fredrick Long, a 1939 Glendale High School graduate, made Arizona and national history as a "master builder" of over 30,000 houses within planned communities. The largest named after his high school sweetheart and wife Mary Tolmachoff. The Arizona Historical Society honored John as History Maker 2001-Visionary and Philanthropist. John's parents immigrated to America and the Valley in 1910 and 1914. Mary's

parents came in 1910. John was born in Phoenix on May 17, 1920. After graduation from high school he hit the rails for work and then served in the U.S. Army Air Force as an engine mechanic on B-17's and B-24's during WWII. He and his Dad formed a construction company to build custom homes, but that did not realize a profit. He then formed a landscaping company with a cousin this with moderate success. John purchased a lot and option on two adjacent lots. He married Mary on May 29, 1947. John and Mary built their dream home together for \$4,000 and were offered \$8,400, so they sold it! He and Mary continued building houses and selling them for a good profit. Mary kept the books and drove their truck. They finally did buy a five

acre parcel at 26th Avenue and Glendale Road and built their home and raised their family. John went on to build 12 individual homes, then a tract of 30 homes; then another tract of 134 homes; then Maryvale Park, building 1,380 homes. His next envisioned project was Maryvale. In 1954, John started to build Arizona's first master-planned community. It included not just homes but land for schools, parks and other community needs. He donated land to the community, state and federal governments in 1956, John said the Maryvale development was called "The Greatest Home Show on Earth." He gave every new homeowner a bumper sticker that said "Maryvale-West is Best." He was building at a rate of 25 houses per day. He donated labor and materials to fill potholes on 550 miles of Phoenix streets. He built the world's first solar subdivision where all electrical needs were provided by the largest ground-mounted PV array. John was inducted into the National Housing Hall of Fame in 1984. He was the first to develop the use of modular mass production techniques such as component assembly of roof trusses, wall sections, and custom-designed cabinetry, assembled at the site, which cut time. He served on the Glendale Union School District Board. John even had a fully equipped testing and research laboratory to produce new building methods, systems and materials. John and Mary were married over 50 years when she died in 1998. John and Mary had two daughters Marya and Shirley and one son, Jake, and four grandchildren. John died on February 29, 2008.

## HISTORY OF THE GLENDALE MUNICIPAL AIRPORT



Isbell Construction Company Airport 1959



Glendale Municipal Airport 1983



Glendale Municipal Airport Today

In 1955 the Isbell Construction Company built a north-south runway from Grand Avenue to Olive Avenue for aerial crop seeding and spraying. The airstrip became available for general aviation in 1966. The airport was named Glendale Airhaven Airport. By 1969 the airport had 24 tie downs. In 1971 the City of Glendale bought, in bankruptcy, the 27 acre airport for \$306,000 from Wings for Christ. An adjacent 13 acres was also bought by the city for the airport. In 1973, the name was changed to Glendale-Air Haven. However, in the same year city officials started to look for other airport locations. The site selection process was extremely difficult with a final decision to

locate a new airport at 107<sup>th</sup> Avenue and Glendale Avenues. However, there was fierce opposition to the proposed \$10 million airport coming from Country Meadows, Sun City, Sun City West, City of El Mirage, Arizona Pilots Association, Phoenix Gazette and the Arizona Republic. Then in 1982, there was a collision, close to Luke AFB, of a military aircraft with a private plane killing six people. The Federal Aviation Administration gave unconditional approval to the new site in 1982. This led to a 1982 agreement with Luke AFB and the City of Glendale for coordination between the two control towers and adherence to flight patterns. The City paid John and Mary Long \$1.6 million

for 159 acres and the Longs donated 244 acres to the City for the airport. The new Glendale Airport broke ground in May 1985 and opened for operation in June 1986. Glendale closed the old airport in June 1986 and sold the old Glendale Airport for \$3.2 million in 1987. The old airport was used for a heliport, but all that remained in 2006 was the runway and three hangars. The new \$15 million airport had a fixed base operator of C & K Aviation, a 5,350 foot runway, 400 plane capacities, a 413,000 take off /landing capacity far exceeding the old airport capacities.

This newsletter is a publication of the  
**Glendale Arizona Historical Society**

PO Box 5606  
Glendale, AZ 85312-5606  
The GAHS Office is located in the  
Sahuaro Ranch Guest House

It is published eight (8) times per year,  
monthly — October through May

**GAHS Phone Numbers:**

Guest House Office: 623.435.0072  
Manistee Ranch Office: 623.931.8848  
Newsletter Editor: 602.770.8202

**GAHS E-mail:**

General Info: gahs73@gmail.com  
Newsletter Editor: gail@gcmeyers.com

**Visit our Website:**

[www.glendalearizonahistoricalsociety.org](http://www.glendalearizonahistoricalsociety.org)

**Your Governing Board of Directors**

Ron Short.....President  
Carol St. Clair.....Vice President  
Jessica Koory.....Secretary  
Martha Cole.....Treasurer  
Martha Dennis.....Director  
Tracy Marsh.....Director  
Catherine Morgan.....Director  
Carol Hook.....Director  
Rosemary Lynch.....Director

*The Glendale Arizona Historical Society is designated as a Certified Historical Society by the Arizona Historical Society. All Rights Reserved.*

Our next membership get together is a presentation by Linda Irick on the "Fred Harvey Girls" April 24, 2017 at 2:00 pm in the afternoon, at Manistee Ranch, 5127 W. Northern Avenue.

Please enter the driveway to Manistee Ranch from 51<sup>st</sup> Avenue, just south of Walgreens. Proceed through the parking lot, and continue through the open vehicle gate. Then keep right, and park along the dirt driveway.

**GAHS**  
**MEMBERSHIP RENEWAL**  
**Reminder**  
Recommit Reconnect Renew



Glendale Arizona Historical Society  
PO Box 5606  
Glendale, AZ 85312-5606

Nonprofit Org  
US Postage Paid  
DMLS

**ADDRESS SERVICE REQUESTED**

## ***Ranch Tours End Soon for the 2016-2017 Season***



Sahuaro Ranch Guest House



Manistee Ranch

There are only a few more dates left for the Glendale Arizona Historical Society tours at the Sahuaro Ranch Guest House and Manistee Ranch. The weather is still excellent so get out and enjoy the rich and colorful past of Glendale's glorious agricultural beginnings.

The Sahuaro Ranch Guest House free tours continue on Sundays, now through May 6<sup>th</sup> from 1pm to 3:30 pm. The remaining tours at Manistee Ranch, 5127 W. Northern Avenue (enter off of 51<sup>st</sup> Avenue) are April 15 and May 6, from noon to 4 pm (last tour starting at 3 pm). Tour fees: \$5 adults, \$4 seniors, \$1 for ages 6-16. Kids under 6 are free. Our schedule and fees are subject to change. For group tours, call 623-435-0072.

The City of Glendale has free tours of the Sahuaro Ranch Main House Fridays and Saturdays, 10 am to 2 pm and Sundays, 1 pm to 4 pm (September –May).